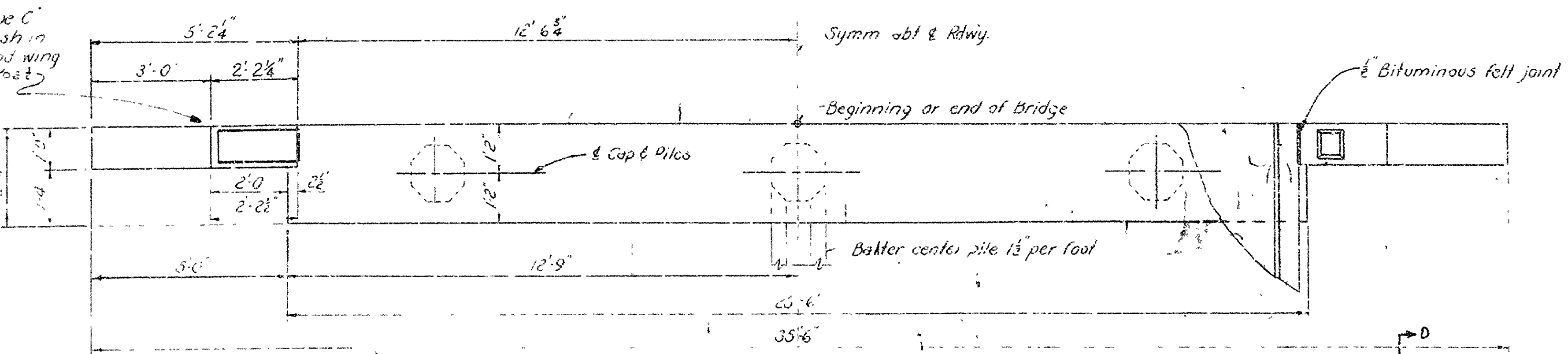


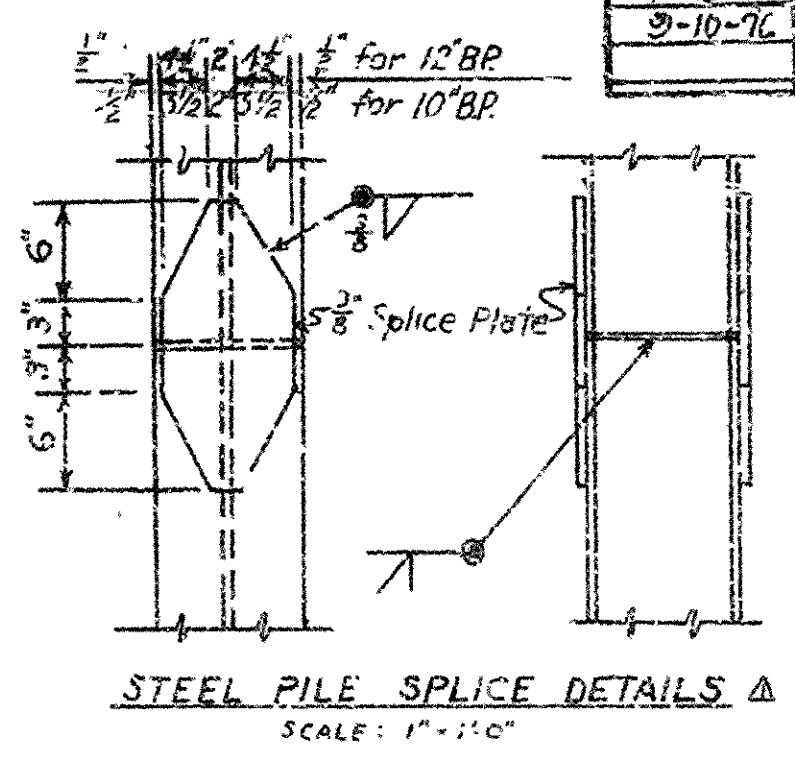
NOTE: Place Type C Name Plate flush in top of right hand wing or on turnout Post

DATE	REVISION	BY	CHKD
7-23-73	1	AS	AS
9-10-76	2	AS	AS

FILE NO.	STATE	PROJECT NO.	SHEET NO.	TOTAL SHEETS
6	ARK.			
STATE JOB NO.				

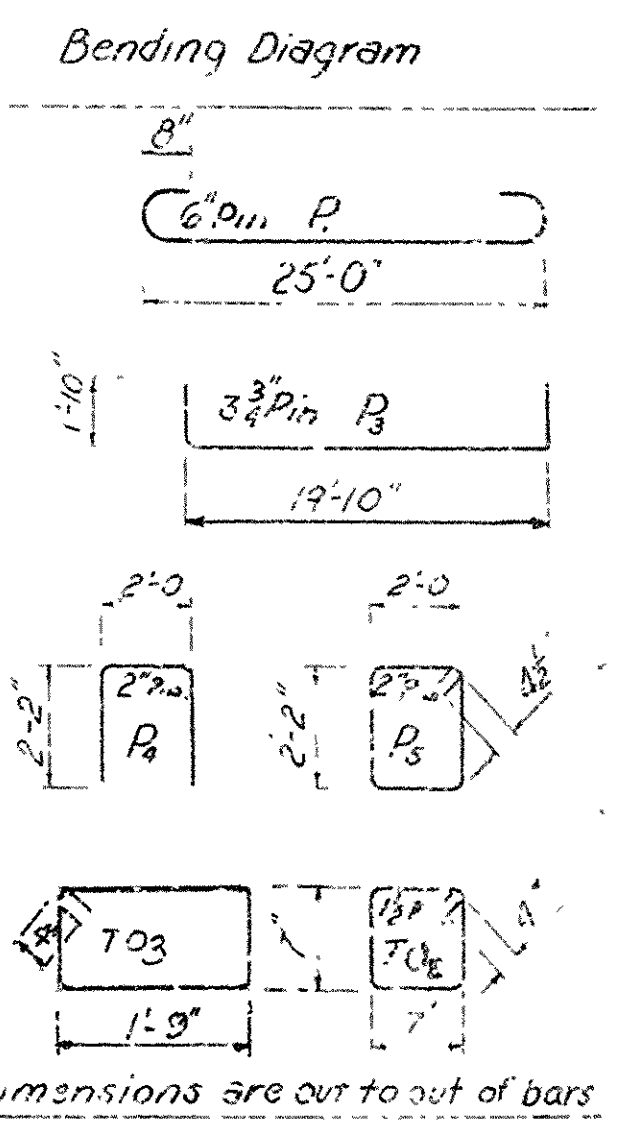


PLAN OF END BENT



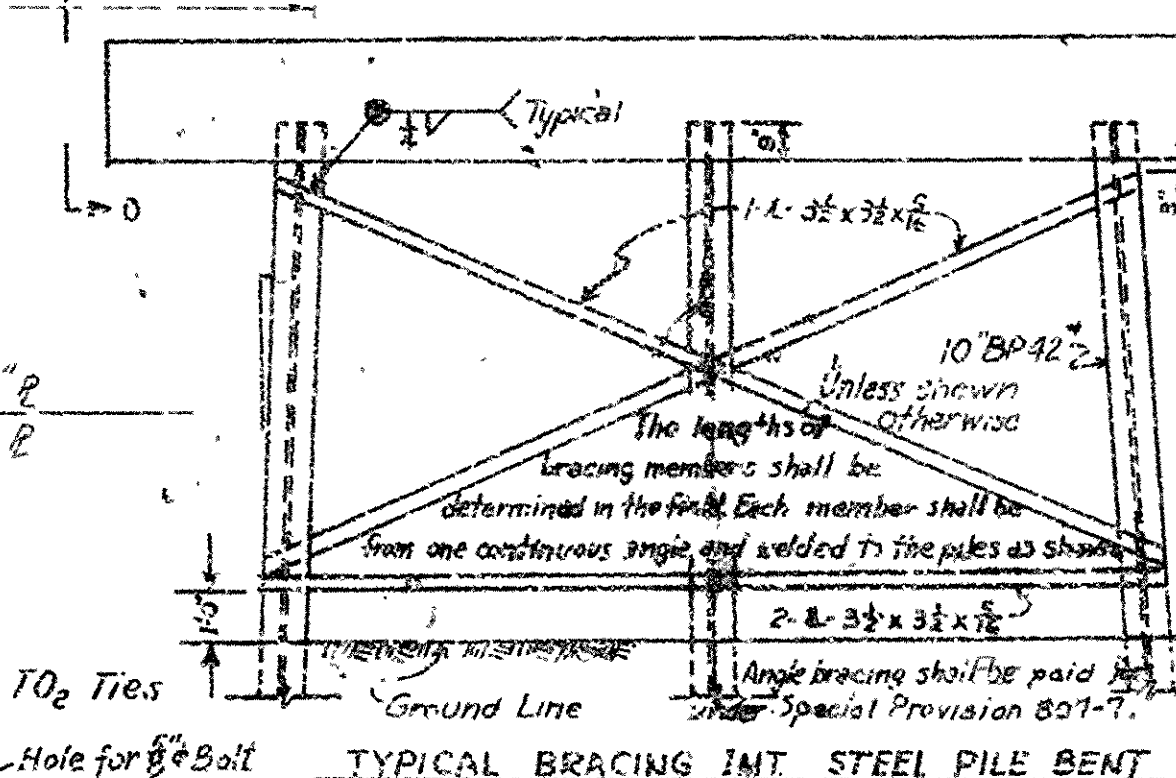
LIST OF REINFORCING STEEL

Mark	Size	No. Req.	Length
P ₁	#8	3	26'-10"
P ₂	#6	4	25'-0"
P ₃	#6	4	23'-3"
P ₄	#4	9	6'-0"
P ₅	#4	38	8'-10"
P ₆	"	12	4'-7"
P ₇	"	4	3'-3"
P ₈	"	4	2'-9"
P ₉	"	4	2'-3"
P ₁₀	"	8	6'-5"
P ₁₁	"	4	6'-3"
P ₁₂	"	4	2'-8"
P ₁₃	"	4	1'-11"
P ₁₄	"	4	5'-2"
P ₁₅	#6	4	1'-11"
T ₁	#8	8	5'-2"
T ₂	#3	6	2'-10"
T ₃	#3	6	5'-2"



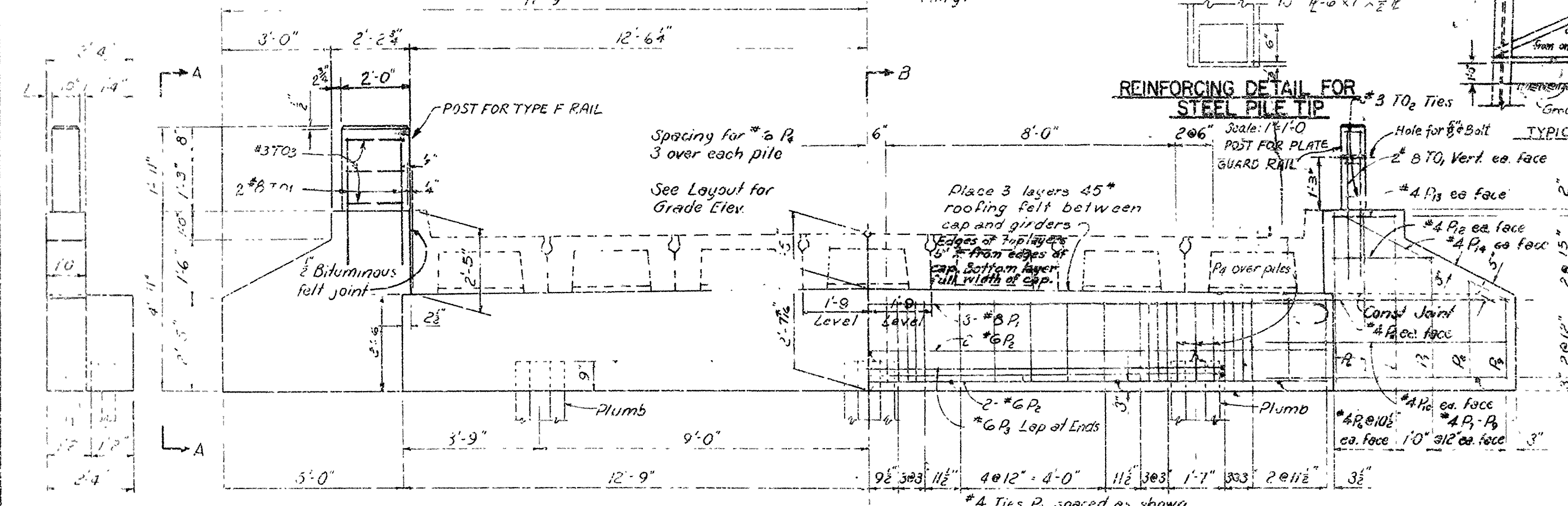
Note: Steel Pile Tip Reinforcing will not be paid for directly, but shall be considered subsidiary to the item of "Steel Bearing Piling"

REINFORCING DETAIL FOR STEEL PILE TIP



* At Fixed Bents only.
* T₁ required for Plate Guard Rail, T₃ required for Type F Rail.

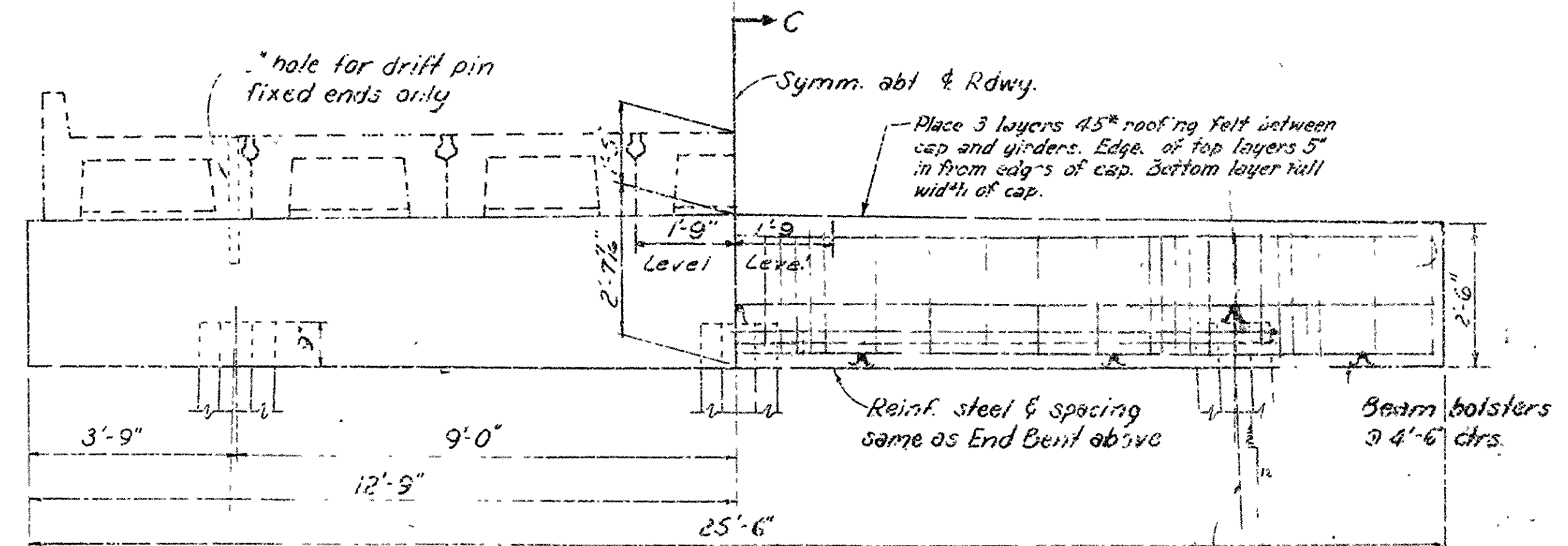
NOTES:
All concrete to be Class S. All exposure corners to be chamfered unless otherwise noted.
For General Notes and Details of slab spans see Dwg. No 5306
Specifications: Arkansas State Highway Commission, "Standard Specifications for Highway Construction", Edition of 1972
Reinforcing steel to be ASTM A615 Grade 40
Shop lists and bending diagrams may be submitted for approval before fabrication is begun.
Steel or Aluminum Plate Guard shall be of the type shown or an equivalent rigid type as approved by the Engineer. The rail, including all posts and fastenings, shall be paid for at the unit price bid per linear foot for "Plate Guard Bridge Rail".



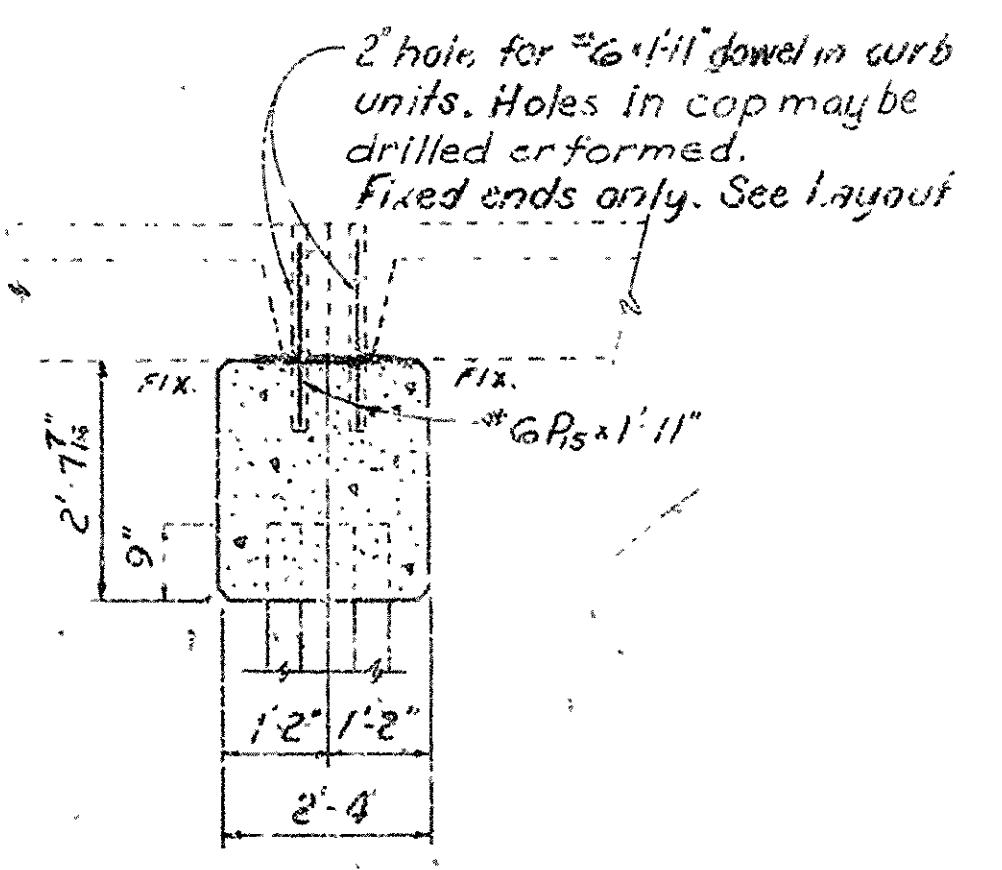
ELEVATION OF END BENT

SECTION B-B

1/4" Sponge rubber compressed to 1" and sealed with asphalt joint filler, not to be paid for directly but considered as subsidiary to Precast Slab Units.



ELEVATION OF INTERMEDIATE BENT



SECTION C-C (EXP)
Showing Slab Details (See Dwg. No. 5306 Reinforcing Units)
Revised by J. L. Jones, 1-23-77 L.M.
Added Footing Detail 9-10-76

Joint materials and roofing felt not to be paid for directly but considered subsidiary to Precast Slab Units.

DETAILS OF STANDARD PILE BENTS
FOR 19'-0" R.C. PRECAST SLAB SPANS
24'-0" CL. RDWY. 9" CURBS

ROUTE SEC.
ARKANSAS STATE HIGHWAY COMMISSION
LITTLE ROCK, ARK.
Drawn By: AS Date: 7-23-73
Traced By: AS Date: 9-10-76
Checked By: AS Date: 7-23-73
BRIDGE NO. DRAWING NO. 5306A